

POYNTING

BEYOND A CONNECTED LIFE

PANGOLIN SERIES



User Guide

Revision 1.0

Index

Packing Checklist	3
Introduction	7
Antenna Configurations	7
Antenna Mounting Precautions	15
Cable Routing	15
Safety	16

Stay Updated: Access the Latest Installation Resources

The information in this manual is intended to provide general guidelines for installing your POYNTING antenna. For the most up-to-date and comprehensive mounting and installation instructions, as well as the latest product information,

Please visit our website: <https://poynting.tech/>.

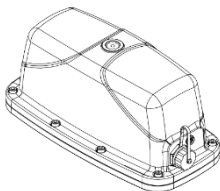
We recommend checking the website periodically for any updates or revisions to ensure you have the most current information for optimal product performance.

1. Packing Checklist

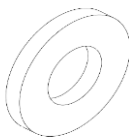
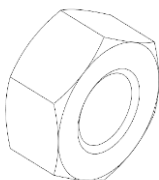
Item	Description	QTY
1.	Antenna	
	Antenna Only	1
	M5x16MM Galvanized Hex Screw	8
	Cable Gland	1
2.	Base Kit	
	Cast Aluminum Base	1
	RF Cable Strain Relief	1
	Cable Strain Relief Bracket	1
	Ethernet Cable Strain Relief	1
	Ethernet Cable Strain Relief Bracket	1
	M4x10mm Galvanized Hex Socket Cap Screw	8
	M4 Galvanized Flat Washer	8
	Router Bracket	1
	M6x25mm Galvanized Hex Socket Cap Screw	2
	8W Thermal Heat Patch 1mm	1
3	Mounting Kit(s)	
	M8 66 X 8.5 Magnet	4
	100mm M8x1.25 Threaded Rod	4
	M8 Nuts	8
	M8 Flat Washer	4
	M8 Spring Washer	4
4.	Tools Provided	
	3mm Allen Key (M4)	1
	4mm Allen Key (M5)	1
	5mm Allen Key (M6)	1

Appearance of Components

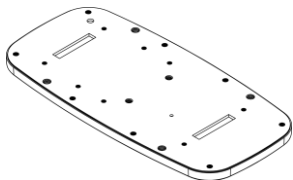
Antenna Unit



Hex Nut, Washer, and Spring washer



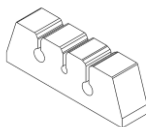
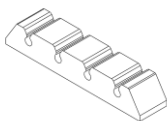
Machine Cap Screw & Aluminum Cast Base



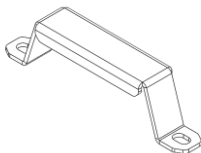
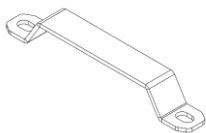
Magnets



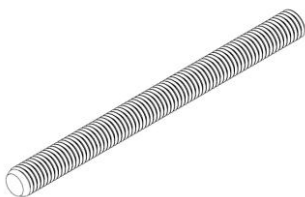
Cable Strain Relief & Ethernet Cable Strain Relief



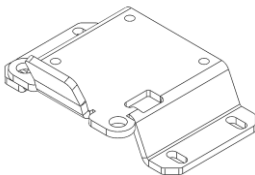
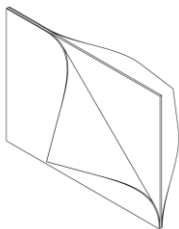
Cable Strain Relief & Ethernet Cable Strain Relief Brackets



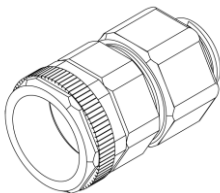
Threaded rod



Thermal Heat Patch & Router Bracket



Cable Gland



Tools Required

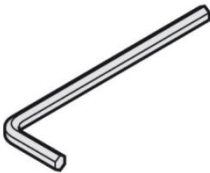
8mm Drills (Pilot Drill) and Step Drill



Impact Drilling and Hacksaw



3mm,4mm,5mm Allen keys*



Safety Goggles



**Item provided*

2. Introduction

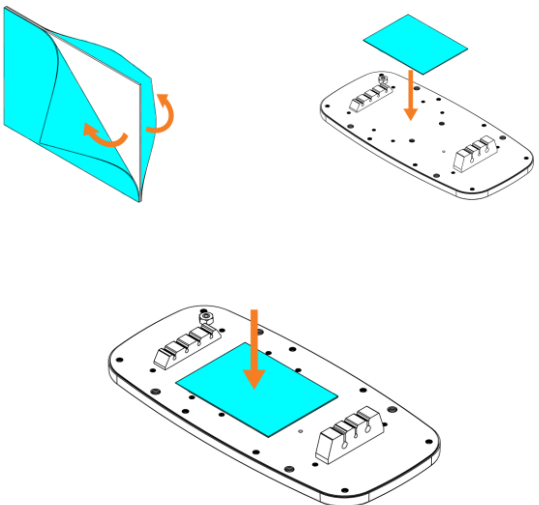
This User Guide provides information on the installation instructions for the **X-Polarized, Omni-Directional** Pangolin antenna.

3. Antenna Configurations

Router Installation

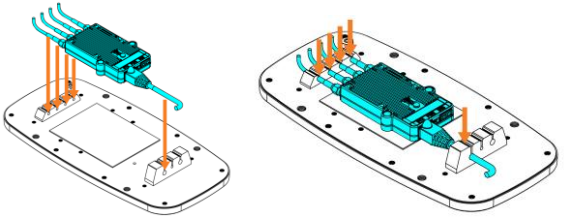
STEP 1

- Place the Cable Strain relief and the Ethernet cable strain relief on the slots in the cast aluminum base.
- Remove the adhesive paper wax from the thermal heat patch and place it on the router plate as shown below.

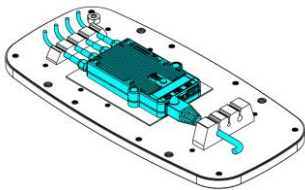


STEP 2

- Place the router on the thermal heat patch, aligning the RF and the Ethernet cables in the grooves on the cable strain relief and Ethernet cable relief as shown below.

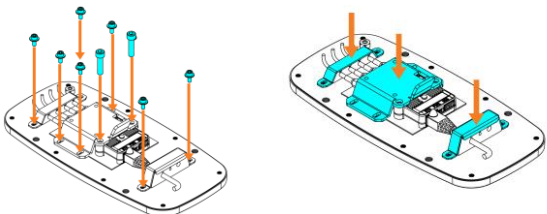


- Ensure that the cables are completely flushed into the grooves to ensure smooth installation.

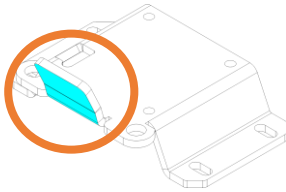


STEP 3

- Fasten the RF Cable Strain relief, Ethernet cable strain relief, and router brackets using M4 flat washer and M4x10mm galvanized hex cap screw.
- Fasten the M6x25mm on the holes close to the router bracket reflector point.
- Use the provided Allen keys 3mm, 4mm and 5mm, respectively.

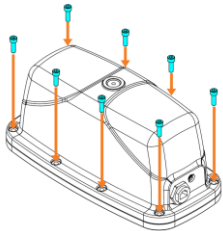
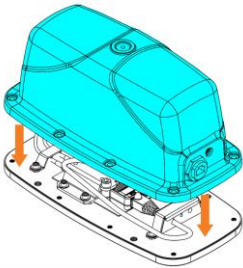


- Wipe the reflector point on the router bracket. Note: Use a micro-fibre cloth.



STEP 4

- Close the radome and fasten using the M5x16mm galvanized hex screws.



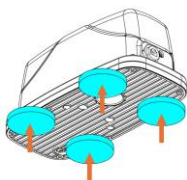
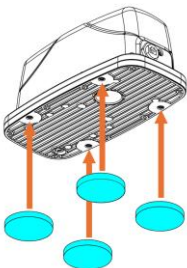
Antenna Configuration 1

Mounting Using M8 66 X 8.5 Magnets

- Clean the entire surface on which you plan to install the antenna.

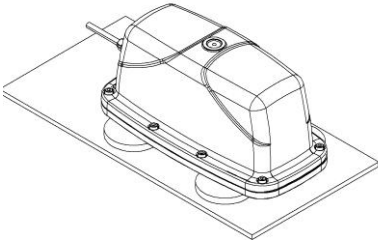
STEP 1

- Fasten the four magnets onto the antenna base as shown below.



STEP 2

- Place the antenna onto the magnetic surface.



Antenna Configuration 2

Surface Mount Using Provided Fasteners

100mm Threaded rod for surfaces between 0-70mm

- Clean the entire surface on which you plan to install the antenna

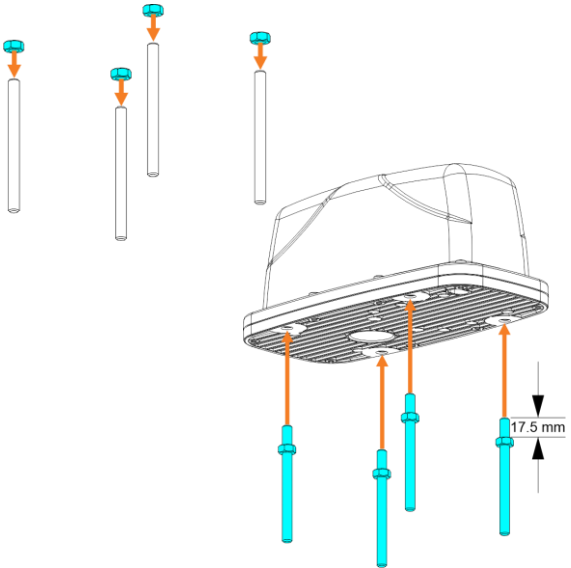
Using the template below, drill four holes onto the mounting surface.



Template available on: <https://poynting.tech/>.

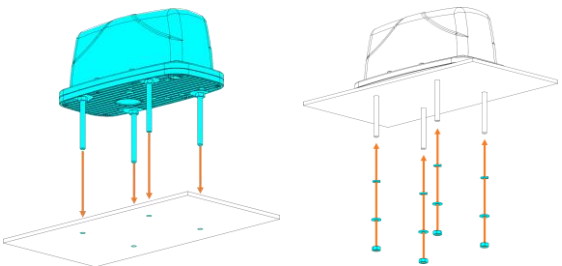
STEP 1

- Pre-fasten the M8 bolts on the 100mm M8x1.5 threaded rods, 17.5mm deep. Slot them into the four (4) holes in the base.



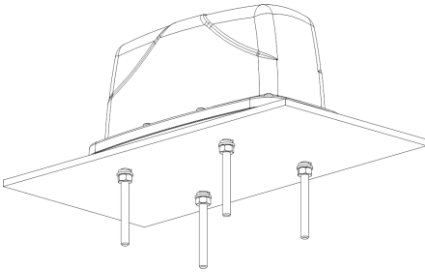
STEP 2

- Place the antenna with the threaded rods on the drilled surface, aligning the threaded rods with the holes.
- Fasten the antenna using M8 Spring washer, flat washers and M8 Nuts below the mounting surface.



STEP 3

- The final installation should look like the illustration below.



- Based on the thickness of the surface, the installer may cut the threaded rods to required length .

Recommended cutting tool: Hacksaw

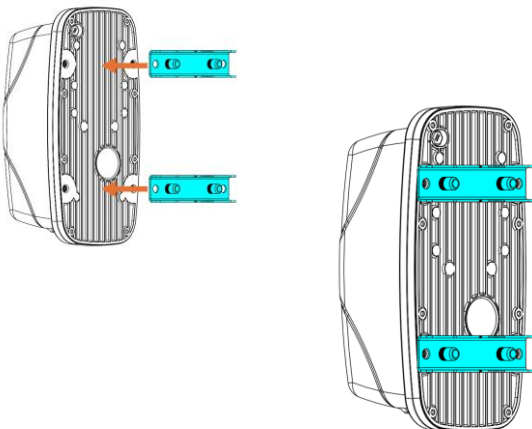
Antenna Configuration 3 (Optional)

Pole Mount Using M8 Econo Bracket

Purchased separately

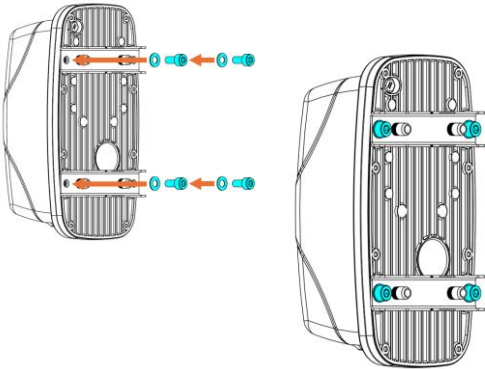
STEP 1

- Place the two (2) Econo brackets with rivnuts on the back of the antenna.



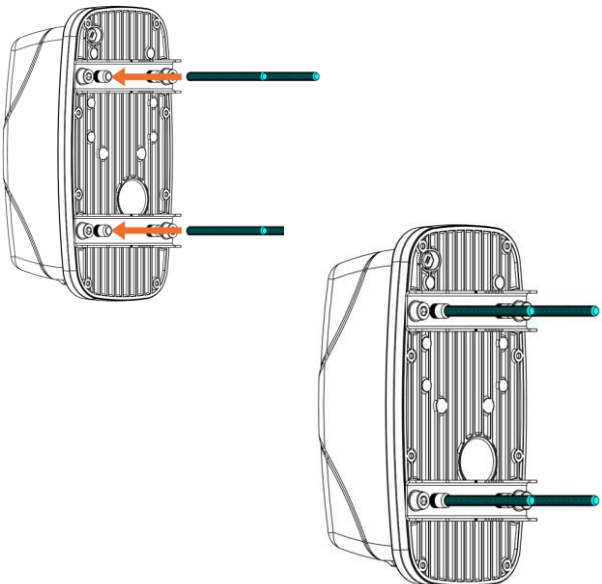
STEP 2

- First place the M8 washer, then fasten the M8x16 machined cap screw on the econo bracket as shown below.



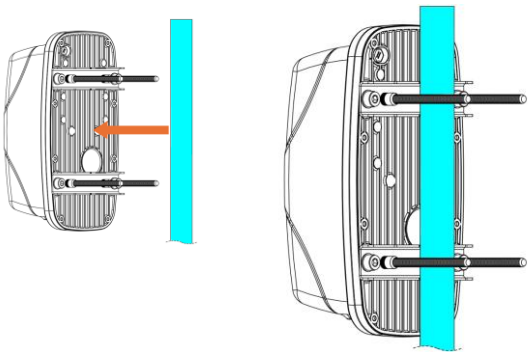
STEP 3

- Slot in the M8x1.5 Threaded rod onto the rivnuts on the Econo bracket.



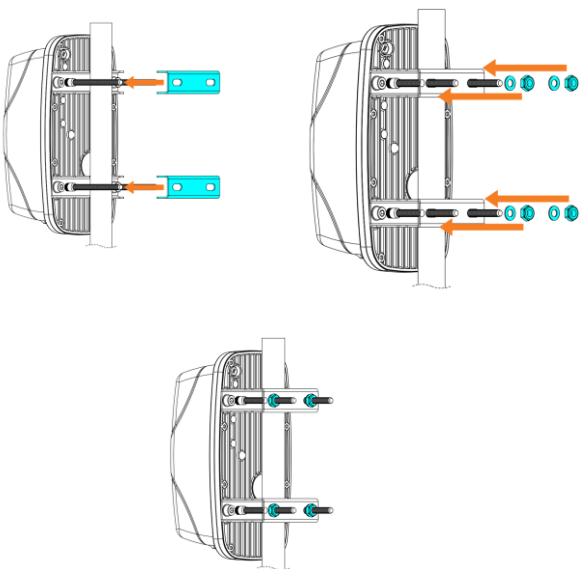
STEP 4

- Place the antenna unit on the desired mounting pole.



STEP 5

- Slot the econo bracket, place the washer, then fasten the machined cap screw on the econo bracket as shown below.



4. Antenna Mounting Precautions

- Place the antenna at the highest point possible and ensure that there are no obstructions surrounding the antenna.
- To avoid communication interference, ensure that the antenna is placed at least 0.5m away from other antennas and metal objects.
- Avoid installing the antenna near a chimney, as the smoke and soot emitted by the chimney can obstruct the signal level achieved by the antenna.
- Install the antenna away from heat sources and flammable gases.

5. Cable Routing

- Survey the planned cable route and look for any blocked passages. Consider alternate routes to find the best available path. Always keep the cables as short as possible to make sure that minimum cable losses are achieved.

Note: Take advantage of any existing cable channels, e.g., wiring conduits, to route the cables.

- Avoid running cables through components or sharp apertures that may cause excessive chafing. Doing so may erode the jacket and break signal continuity. Also, avoid kinking, pinching, or twisting a cable during a run.

When handling the antenna cables, you must follow these basic rules:

- Never pull on the cable connectors; pull only on the cable.
- Cover connectors with insulation tape before threading them through a hole.
- Tighten the connectors and ensure that the cables don't rattle loose.

6. Safety

- If you are installing an antenna for the first time or are unsure about how to install your antenna, obtain the help of a professional installer.
- Carefully survey the installation site before installation to locate secure handholds, dangerous conditions, and the safest and most convenient placement for ladders if necessary.
- The antenna may not be used as a climbing or pulling device.
- Considerations must be taken when mounting the antenna so that people do not hang or pull on it.
- When installing your antenna, remember:
 1. Do not install on a wet or windy day or when there is lightning or thunder in the area.
 2. Wear shoes with rubber soles and heels, protective clothing (long-sleeve shirt or jacket), and rubber gloves.
 3. Avoid installation while under the influence of drugs, alcohol, or medication.

4. Make sure that any loose-fitting jewelry or clothing is secured and tie back long hair, as they can get caught in moving parts during installation.
 5. If the antenna assembly starts to fall, get away from it and let it fall to avoid harming yourself.
- When drilling, remember:
 1. Use safety goggles when drilling the holes.
 2. Avoid using bits that are dull, bent, or damaged.
 3. Be aware of where your fingers are to the drill bit when using the drilling machine.
 4. To stop the drilling machine, let the drill chuck come to a complete stop on its own. Do not grasp the chuck to stop the drill bit.
 5. Avoid awkward hand positions where a sudden slip could cause a hand to move into the drill bit or cutting tool.

CAUTION:

Antennas must be installed to provide a separation distance of at least 20cm from all persons to comply with SAR (Specific Absorption Rate) RF Exposure requirements.



European Waste Electronic Equipment
Directive 2002/96/EC

Please ensure that old waste, electricals,
And electronics are recycled.



Directive 2011/65/EU (RoHS 3)

This product is fully compliant with the RoHS
3 directive.

South Africa

Unit 4, N1 Industrial Park
Landmarks Ave
Samrand, 0157
South Africa
Tel: +27 12 657 0050
info@poynting.tech

USA

1804 Owen Court,
Suite 104, Mansfield,
TX 76063
USA
Tel: +1 817 533-8130
sales-us@poynting.tech

Europe

Kronstadler Straße 4,
81677 München
Germany
Tel: +49 89 2080 265 38
Mob.: +49 176 529 733 50.
sales-europe@poynting.tech